

Please ask your parents to keep all your Chinese worksheets in a safe place so you can bring them back to school to show me your lovely work.

Hope you had a safe and enjoyable holiday. Now have fun with this week's activities. Try to finish this by Thursday.

Write the short date for today _____. Then write the Chinese date in the boxes below.

jīn 今	tiān 天	shì 是				nián 年		yuè 月
	rì 日	xīng 星	qī 期		。			

L.I.: My Family Home ^{wǒ de fáng zǐ} 我的房子 - parts

S.C.: - I can say living room ^{chē kù} 车库 and dining room ^{huā yuán} 花园 in Chinese.

First let us check your answers to the activities in Term 3 Week 10.

The English meaning of the following parts of your home?

chú fáng

厨房 kitchen

shuì fáng

睡房 bedroom

yù shì

浴室 bathroom

What is another way to say your family home? Write it in the box.

We can say ^{wǒ de fáng zǐ} 我的房子 or 我的

jiā
家

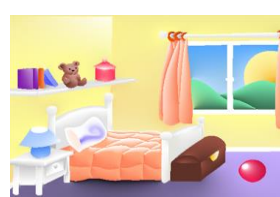
Label the parts in your home that you have learned so far.



yù shì
浴室



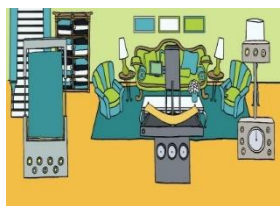
chú fáng
厨房



shuì fáng
睡房



fàn tīng
饭厅



kè tīng
客厅



We are going to learn how to say garage and garden or backyard



in Chinese. Scan



and listen.

These two places are usually outside your home. As in many other Chinese expressions, the names of these two places are made up of two Chinese characters, each with a meaning of its own.

The garage is where mum and dad put their car in and lock it up so it is safe. 车 is car and 库 is a safe locked up place. Put them together, 车库 is a safe locked up place for the car, the garage.

花 is flower and 园 is a fenced open area with no buildings on it. I am sure there are flowers in your backyard so put 花 and 园 together means the garden 花园.



Let's do some writing.

车 一 左 右 车

chē 车								
----------	--	--	--	--	--	--	--	--

What is 车 in English? _____

花 一 十 廿 卅 肆 伍 花 花

huā 花								
----------	--	--	--	--	--	--	--	--

What is 花 in English? _____



Thank you for trying 谢谢.