

Name: _____

Please ask your parents to keep all your Chinese worksheets in a safe place so you can bring them back to school to show me your lovely work.

Write the short date for today _____. Then write the Chinese date in the boxes below.

jīn 今	tiān 天	shì 是					nián 年		yuè 月
		rì 日	xīng 星	qī 期		。			

L.I.: My Family Home ^{wǒ de fáng zǐ} 我的房子 - parts

S.C.: - I can say house in Chinese.

- I can say living room ^{kè tīng} 客厅 and dining room ^{fàn tīng} 饭厅 in Chinese.

You have learned the bedroom, kitchen and bathroom. Go back to Week 7 and 8 worksheets, scan and listen again.

Can you give the English meaning of the following parts of your home?

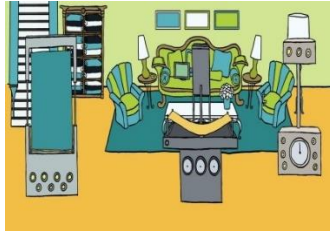
^{chú fáng}
厨房 _____

^{shuì fáng}
睡房 _____

^{yù shì}
浴室 _____

What is another way to say your family home? Write it in the box.

We can say ^{wǒ de fáng zǐ} 我的房子 or 我的 。



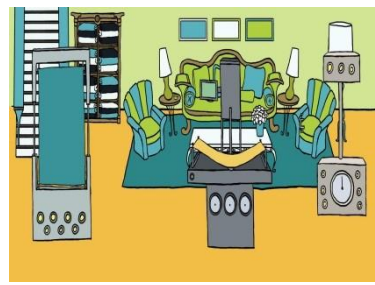
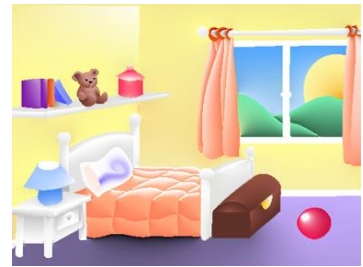
We are going to learn how to say living room and dining room



in Chinese. Scan and listen.

Although these two places are called rooms in English, they are usually bigger and do not have a door. That is why in Chinese we do not call them 房, instead we say 厅. We usually invite our guests to the living room so in Chinese it is 客 (guest) 厅. We have dinner in the dining room so in Chinese it is 饭 (rice or meal) 厅.

Label the parts in your home that you have learned so far.



Cut the six boxes of Chinese characters out and glue it under the correct part in the house.

k è tīng 客厅	shuì fáng 睡房	fàn tīng 饭厅	chú fáng 厨房	yù shì 浴室
----------------	-----------------	----------------	----------------	--------------