

Year 2 General Studies

National Parks

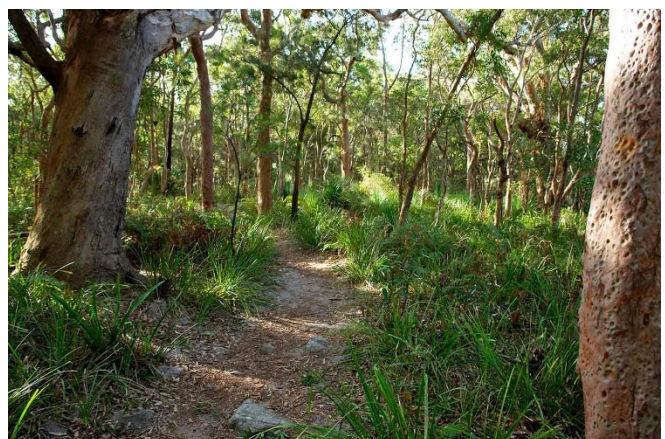
Australia has an abundance of national parks and conservation reserves. These protect Australian native landscapes such as rainforests and eucalypt woodlands, as well as unique native plants and wildlife. Did you know that Australia's first national park was the Royal National Park created in 1879? It was the second in the world.

Australia's Need for National Parks

National parks came from concerns about public health due to the overcrowded and unclean conditions of large industrial cities. Today, their focus is more on conserving plants, animals and ecological processes. Australia now has more than 500 national parks covering 28 million hectares.

National Parks & Conservation Reserves

There are many national parks and other types of conservation reserves across Australia. These areas protect a huge variety of environments - from deserts to rainforests, and coral reefs to eucalypt woodlands. Only a few 'national' parks are managed at a national level by the Australian Federal Government. Most parks and reserves are conserved by government agencies in each of Australia's eight states and territories.



Year 2 General Studies
National Parks

Questions

1. What year was the Royal National Park created?

2. Approximately how many national parks does Australia have? (Circle the correct answer)

5 / 50 / 500

3. Why were national parks originally created?

4. The Royal National Park is the oldest national park in the world.

True / False

5. All national parks are managed at a national level by the Australian Federal Government.

True / False

6. List two environments that national parks help protect.

i _____

ii _____